



21 Parkhill, Gorebridge, EH23 4BP
Offers Over £120,000



MONARCH
LEGAL



This well-presented first-floor flat, set within a two-storey block at 21 Parkhill, Gorebridge, offers bright and modern accommodation with a practical layout, featuring a separate kitchen and a spacious sitting/dining room overlooking Gore Glen Park.



MONARCH
LEGAL





The property includes a double bedroom with plenty of room for storage and a well-kept three-piece bathroom featuring a contemporary suite and shower.

The property also benefits from a private front garden, an allocated parking space, gas central heating and double glazing.

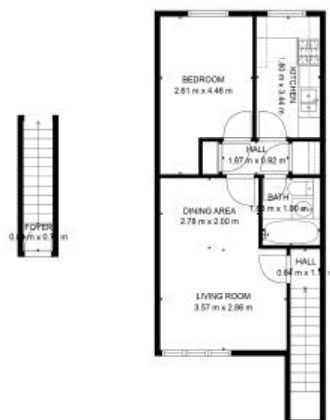


MONARCH
LEGAL



Approx. Gross Internal Area:
505 Sq Ft (47 Sq M)

For identification purpose only. Not to scale.
www.wear95.com



Video Tour



sales@monarch-legal.co.uk



monarch-legal.co.uk